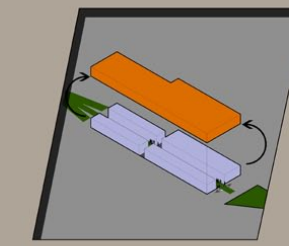


1:1000 Burleigh Location
Plan



DESIGN RULES/CONCEPTS



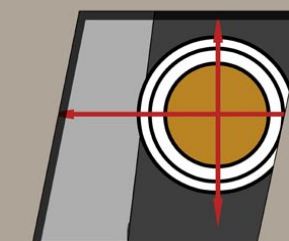
Raise built form above ground plain to allow the creation of green space and program separation from busy alleyway.



Burleigh Heads CBD has very little in the way of stairs or steep inclines, echoing this in the design will allow ease of access to the wheelchair bound.



Burleigh Heads has hot, humid summers and mild winters. Creating a built form that responds to this is critical for comfortable occupation.



Ensure that the pedestrian core and pedestrian thoroughfare, which dives underneath the alleyway, is will activated and utilised.



MATERIALITY



BLUE STONE BRICK

As the walls and seating along the pedestrian path



STEEL

As the main structural exoskeleton



TIMBER

Forming a key element for the facades of all shops and residences



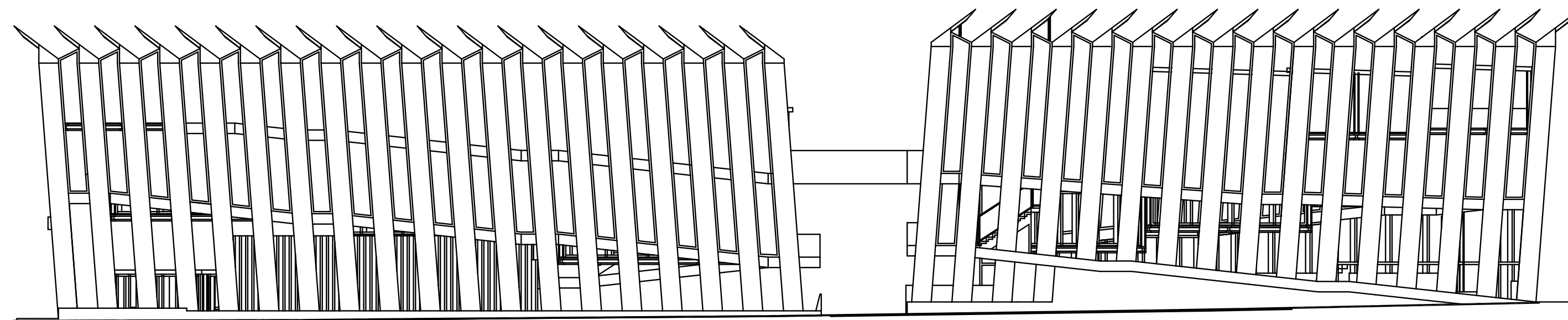
GLASS

Forming a key element for the facades of all shops and residences

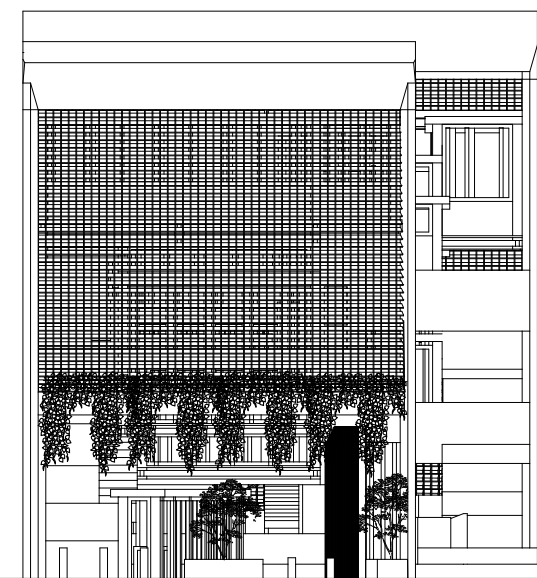
4 JAMES

STUDIO TWO - PROJECT THREE
FINAL SUBMISSION

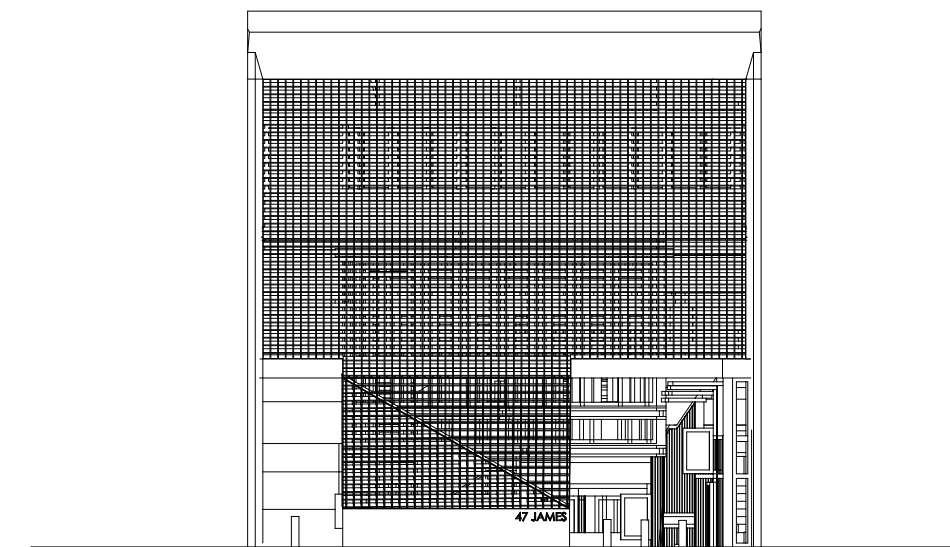
HARRISON DOWLING - S2852335



1:200 Western Elevation



1:200 Gold Coast Highway Elevation

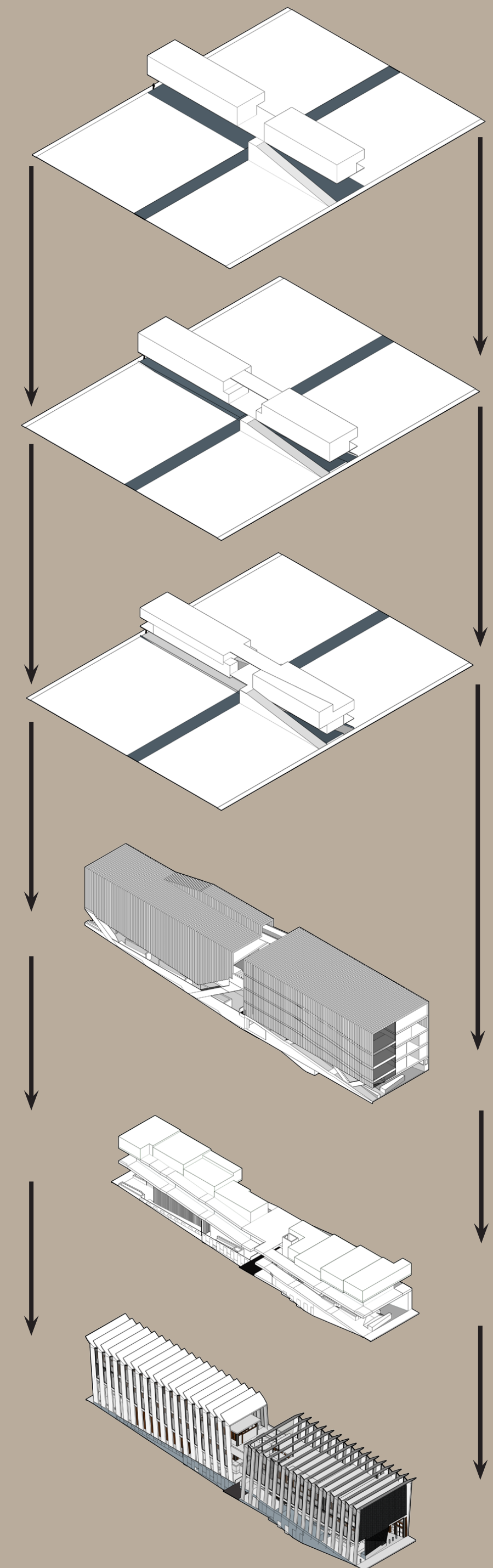


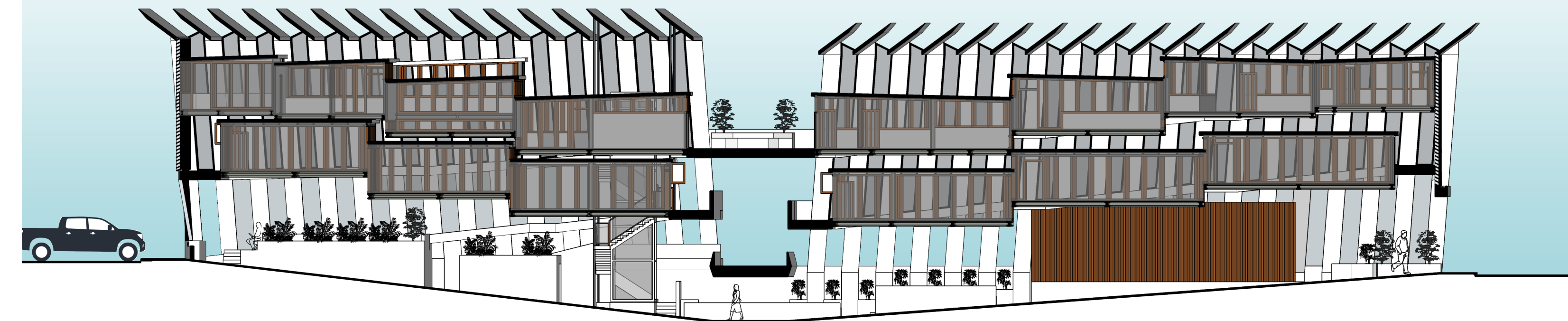
1:200 James Street Elevation



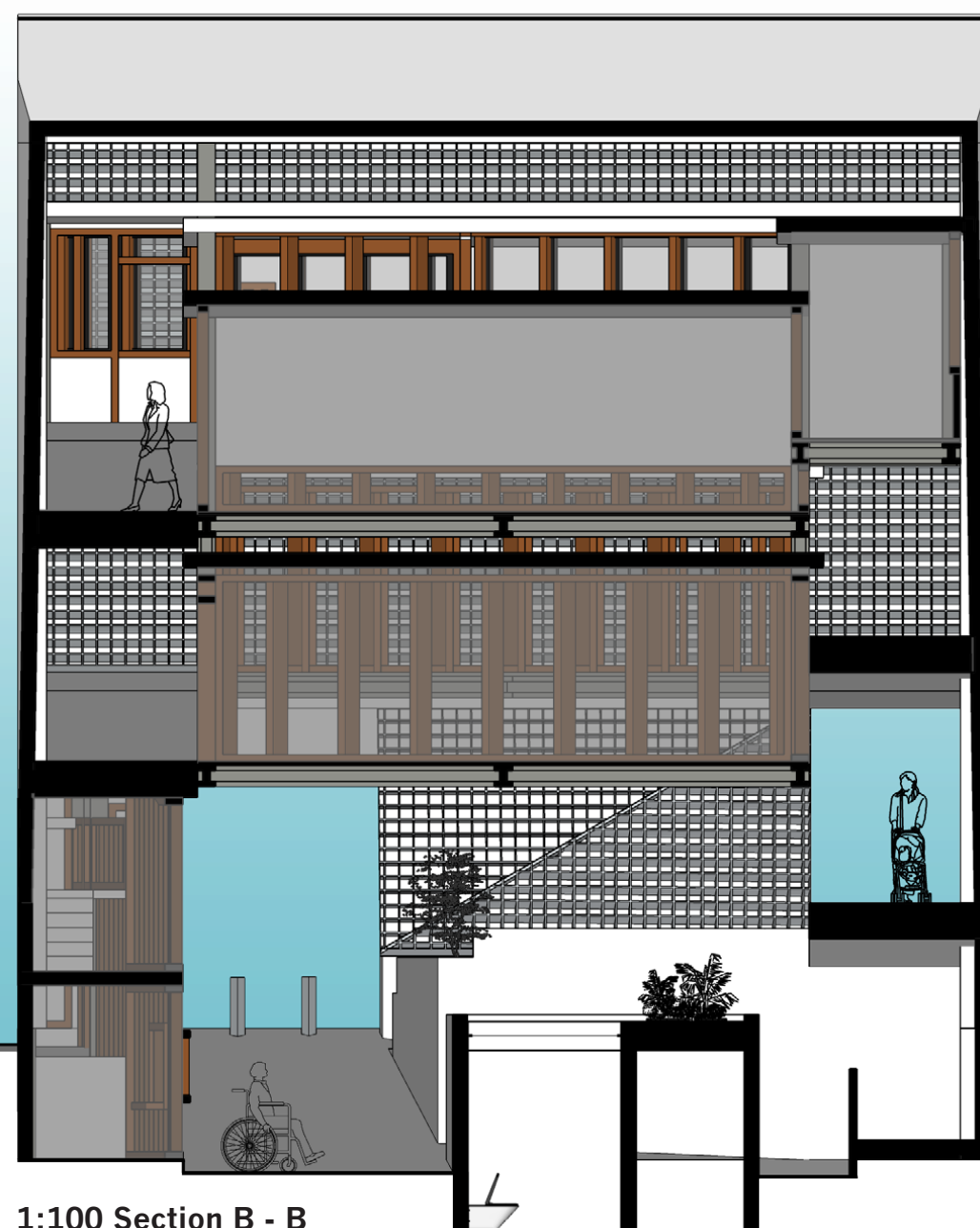
1:500 Burleigh CBD Site Plan

EVOLUTION OF THE DESIGN





1:200 Section A - A



1:100 Section B - B



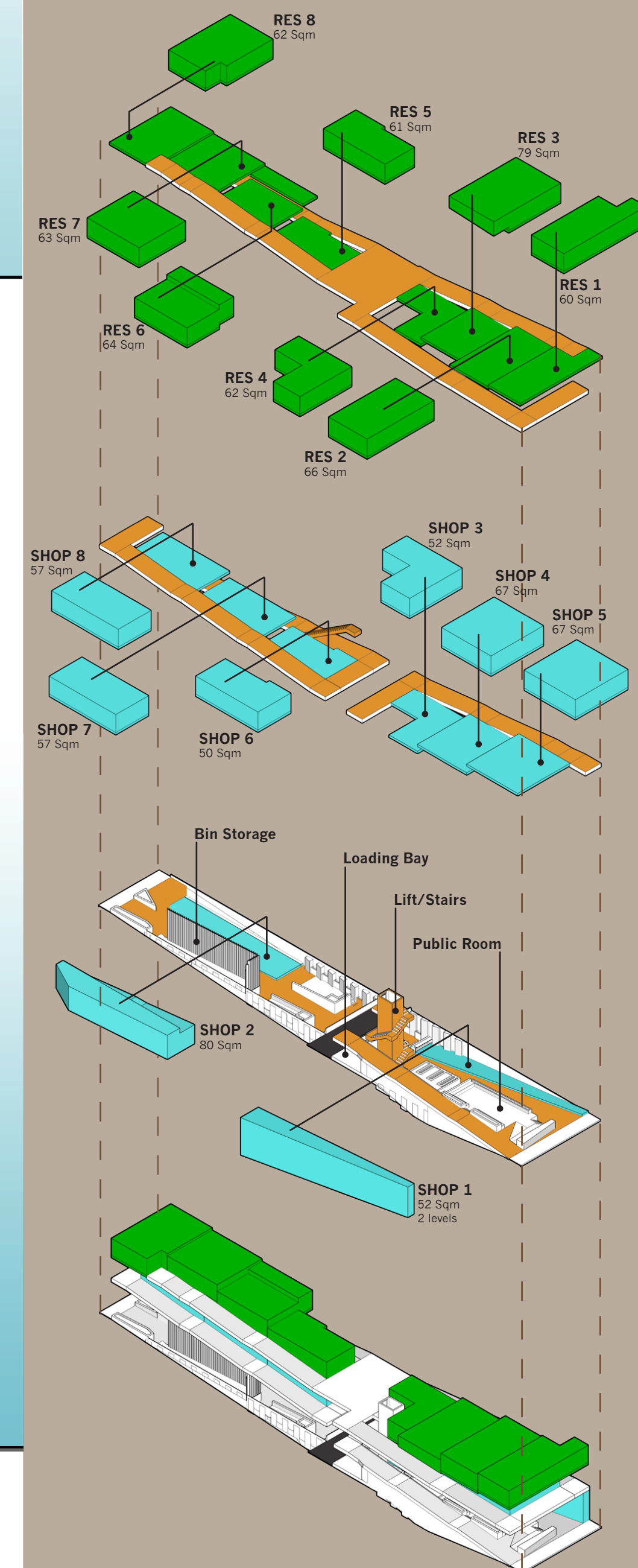
1:100 Section C - C

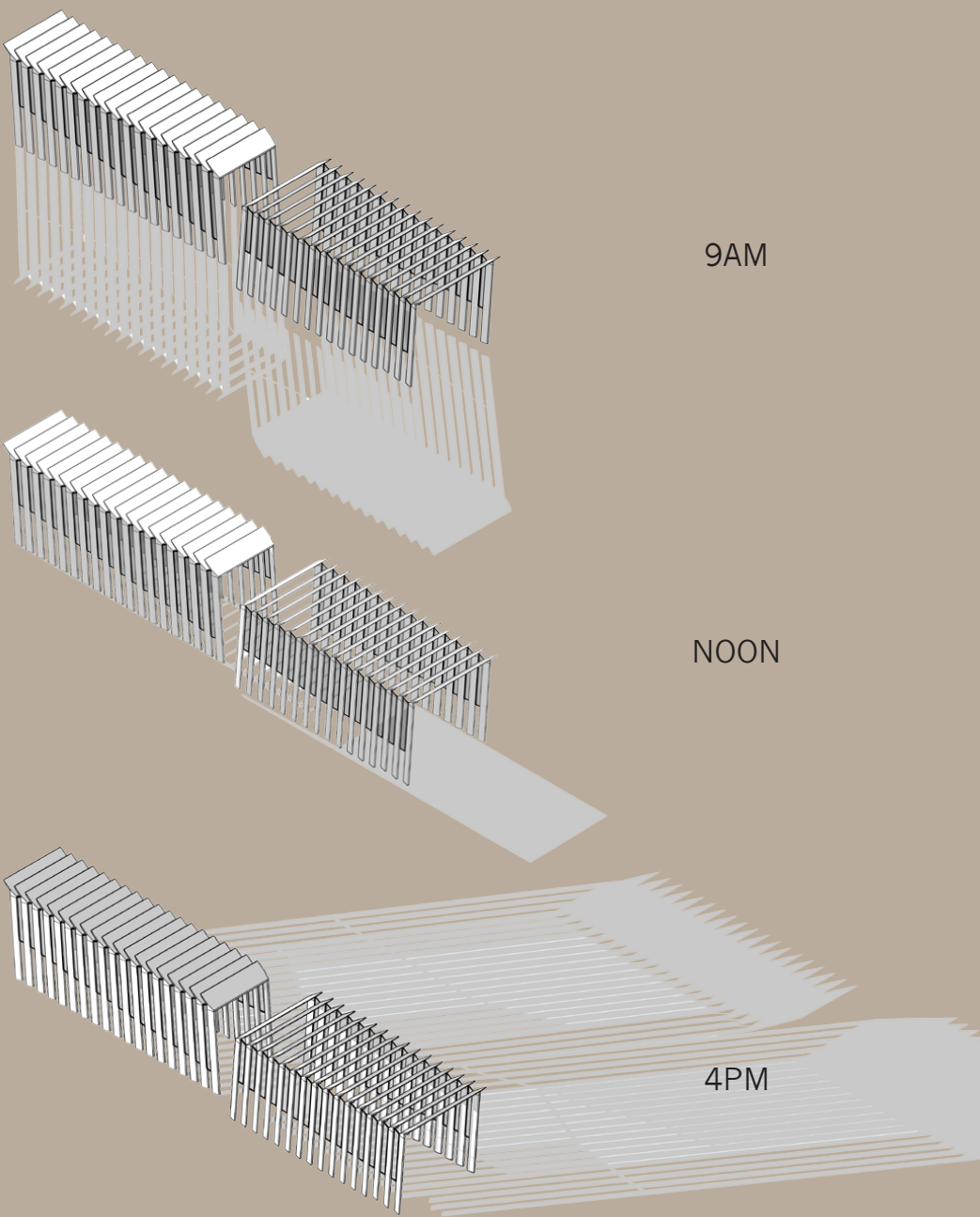
PROGRAM BREAKDOWN

Green: Residential

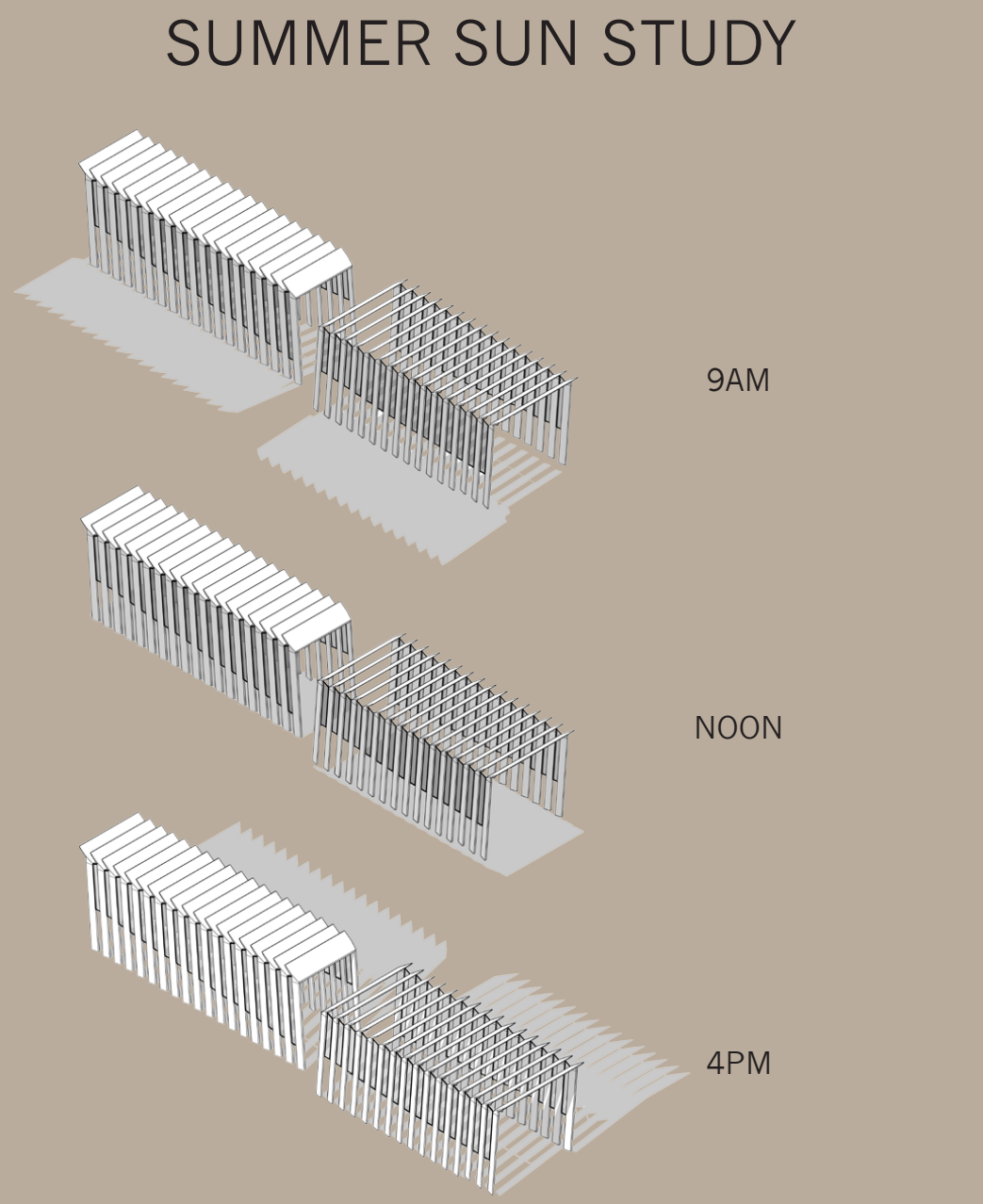
Blue: Commercial

Orange: Pedestrian Pathways



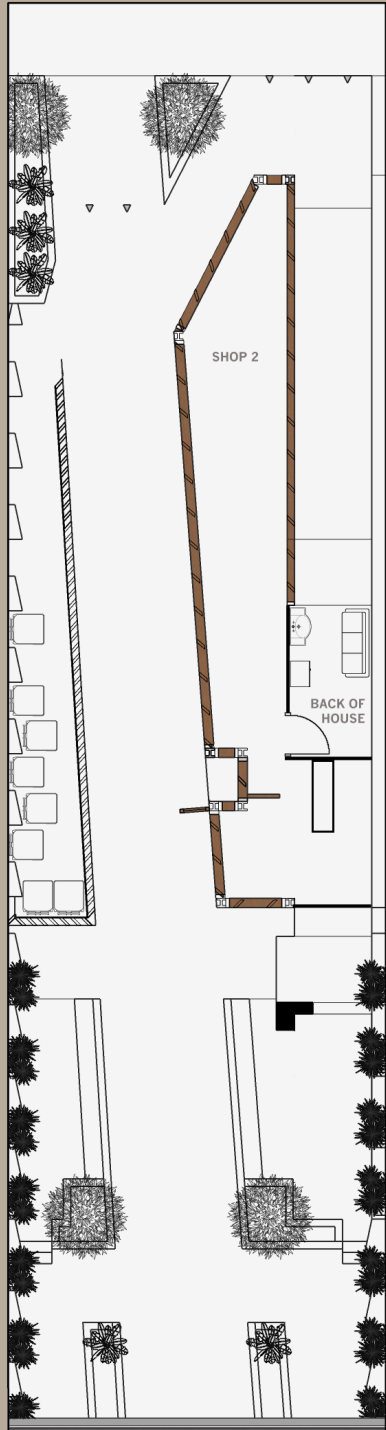


WINTER SUN STUDY

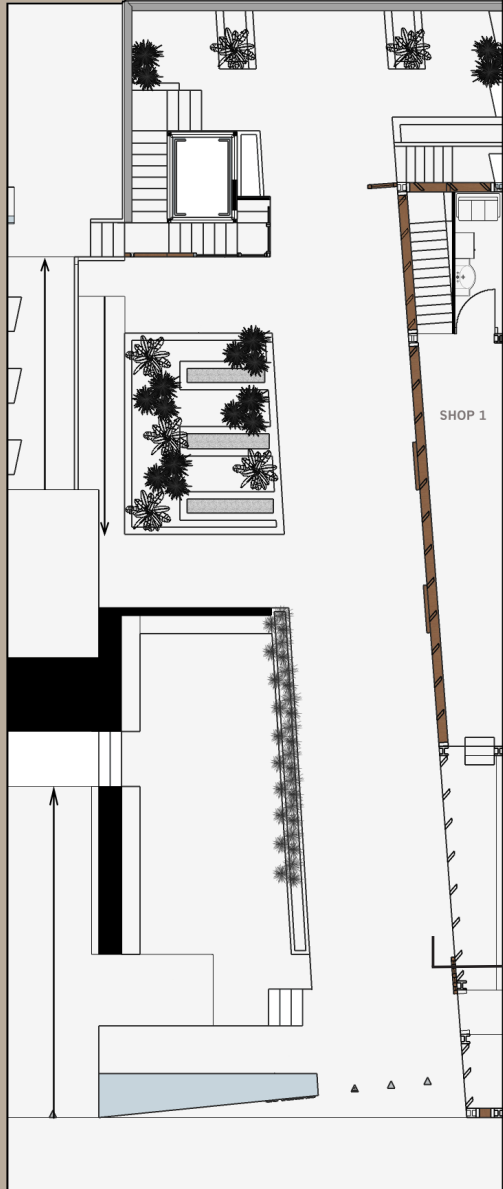


SUMMER SUN STUDY

GOLD COAST HWY

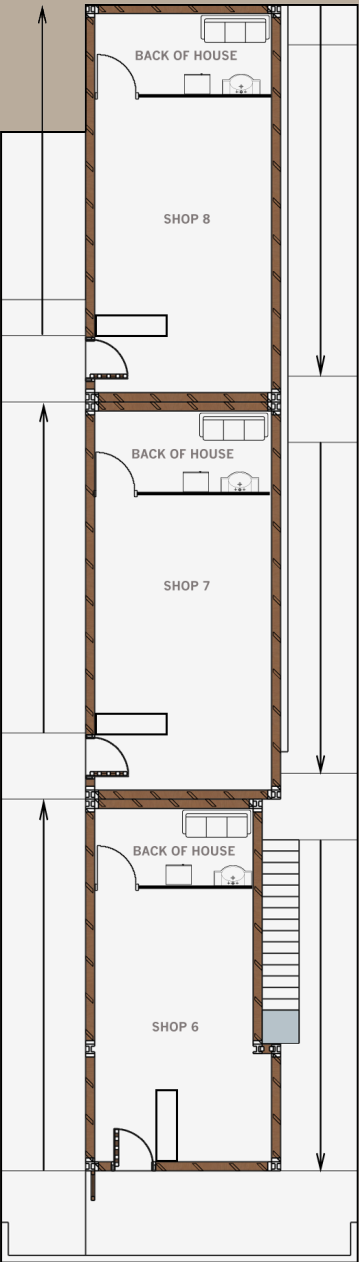


GROUND PLAIN

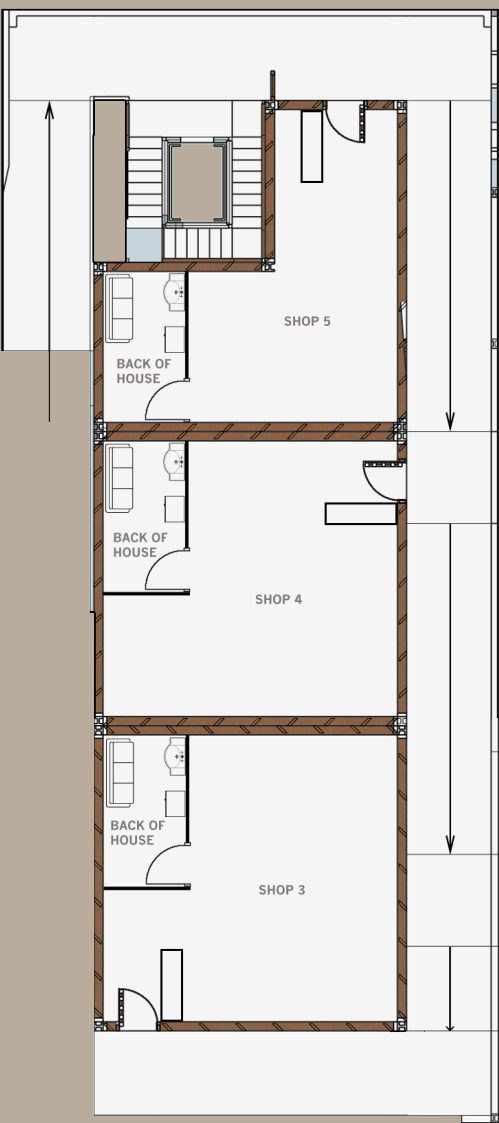


Section Cut D - D

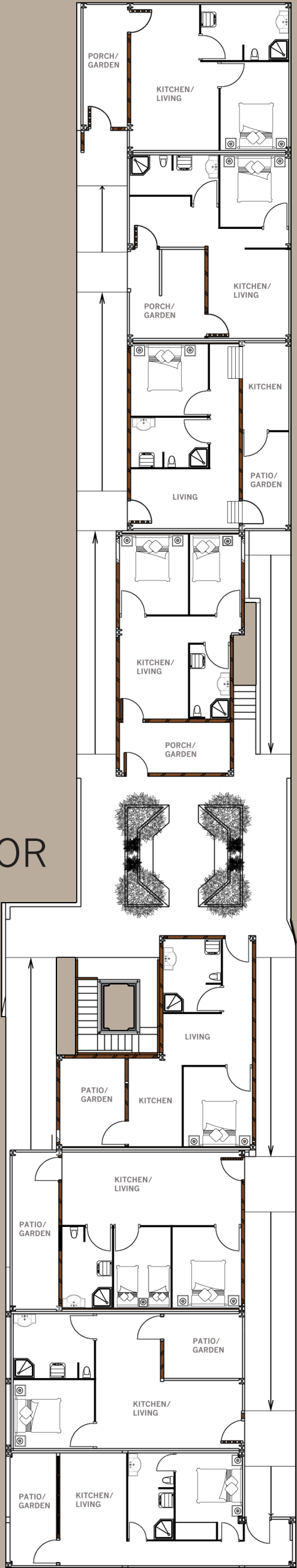
JAME STREET



FIRST FLOOR



SECOND FLOOR



MODEL PHOTOS:

MODEL IS 1:200 SCALE AND IS INTENDED TO ILLUSTRATE THE PEDESTRIAN PATHWAYS THROUGHOUT THE DESIGN AS WELL AS THE NATURE OF THE EXTERNAL SKIN.

